

**S
A
M
P
L
E
B
A
L
L
O
T**

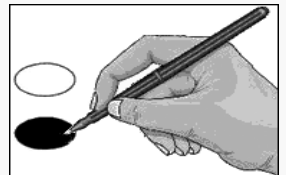
Sample Ballot
Clay County, North Carolina
November 8, 2022



B0002

BALLOT MARKING INSTRUCTIONS:

- A. With the marking device provided or a black ball point pen, completely fill in the oval to the left of each candidate or selection of your choice as shown.
- B. Where authorized, you may write in a candidate by filling in the oval and writing the name on the Write-in line.
- C. If you tear, deface or wrongly mark this ballot, return it to request a replacement.



FEDERAL OFFICES	NC Court of Appeals Judge Seat 8 (You may vote for ONE)	DISTRICT OFFICES
US Senate (You may vote for ONE)	<input type="radio"/> Julee Tate Flood Republican Party <input type="radio"/> Carolyn Jennings Thompson Democratic Party	NC Superior Court Judge District 30A - Seat 1 (You may vote for ONE)
<input type="radio"/> Matthew Hoh Green Party <input type="radio"/> Cheri Beasley Democratic Party <input type="radio"/> Shannon W. Bray Libertarian Party <input type="radio"/> Ted Budd Republican Party <input type="radio"/> Write-in	NC Court of Appeals Judge Seat 9 (You may vote for ONE)	<input type="radio"/> William H. (Bill) Coward Republican Party
US House of Representatives District 11 (You may vote for ONE)	<input type="radio"/> Brad A. Salmon Democratic Party <input type="radio"/> Donna Stroud Republican Party	NC District Court Judge District 30 - Seat 1 (You may vote for ONE)
<input type="radio"/> David Adam Coatney Libertarian Party <input type="radio"/> Chuck Edwards Republican Party <input type="radio"/> Jasmine Beach-Ferrara Democratic Party	NC Court of Appeals Judge Seat 10 (You may vote for ONE)	<input type="radio"/> Donna Forga Republican Party
STATE OFFICES	NC Court of Appeals Judge Seat 11 (You may vote for ONE)	NC District Court Judge District 30 - Seat 2 (You may vote for ONE)
NC Supreme Court Associate Justice - Seat 3 (You may vote for ONE)	<input type="radio"/> John M. Tyson Republican Party <input type="radio"/> Gale Murray Adams Democratic Party	<input type="radio"/> Kristina Lynn Earwood Republican Party
<input type="radio"/> Richard Dietz Republican Party <input type="radio"/> Lucy Inman Democratic Party	NC Court of Appeals Judge Seat 11 (You may vote for ONE)	NC District Court Judge District 30 - Seat 3 (You may vote for ONE)
NC Supreme Court Associate Justice - Seat 5 (You may vote for ONE)	<input type="radio"/> Darren Jackson Democratic Party <input type="radio"/> Michael J. Stading Republican Party	<input type="radio"/> Roy Wijewickrama Democratic Party
<input type="radio"/> Sam J. Ervin IV Democratic Party <input type="radio"/> Trey Allen Republican Party	NC State Senate District 50 (You may vote for ONE)	District Attorney District 43 (You may vote for ONE)
	<input type="radio"/> Kevin Corbin Republican Party <input type="radio"/> Karen Burnette McCracken Democratic Party	<input type="radio"/> Ashley Hornsby Welch Republican Party
	NC House of Representatives District 120 (You may vote for ONE)	
	<input type="radio"/> Karl E. Gillespie Republican Party	
		Continue voting next side

-- VOTE BOTH SIDES --

D	PCT HAY1	E	HAYESVILLE ONE	F	
COUNTY OFFICES		NONPARTISAN OFFICES			
Board of Commissioners (You may vote for THREE)		Soil and Water Conservation District Supervisor (You may vote for TWO)			
<input type="radio"/> Russell Hughes Unaffiliated <input type="radio"/> Clay Logan Republican Party <input type="radio"/> Dwight H. Penland Republican Party <input type="radio"/> Scotty Penland Republican Party <input type="radio"/> Pam Roman Unaffiliated		<input type="radio"/> Tammy Mull <input type="radio"/> Ronnie J. Smith <input type="radio"/> _____ Write-in <input type="radio"/> _____ Write-in			
Board of Education (You may vote for THREE)		End of Ballot			
<input type="radio"/> Robert (Robbie) Caldwell Republican Party <input type="radio"/> Kelly L. Crawford Republican Party <input type="radio"/> Glenn Marcel Unaffiliated <input type="radio"/> Jason Shook Republican Party					
Clerk of Superior Court (You may vote for ONE)					
<input type="radio"/> J. Tim Barrett Republican Party					
Register of Deeds (You may vote for ONE)					
<input type="radio"/> Angie Shook Republican Party					
Sheriff (You may vote for ONE)					
<input type="radio"/> Mark Buchanan Republican Party					
D		E	North Carolina	F	Ballot Style B0002

S
A
M
P
L
E

B
A
L
L
O
T

-- VOTE BOTH SIDES --